



Ossie McLean ACO | Camera Operator

Fully experienced with the following camera systems: Panavision: Genesis, Platinum Panaflex, Golden Panaflex, Panastar Arriflex: Arricam ST, D21, Arricam LT, 535, 435, BL4s, III, SR3
Aaton: 35mm, XTR Prod, XTR Plus, A-Minima Sony: DWW-790, HDWF-900, 750, F35
Moviemcam: Compact, SL Panasonic: Varicam

Selected Credits



Kingsman:
The
Golden
Circle



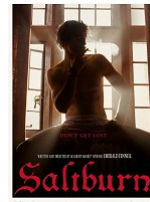
Matilda



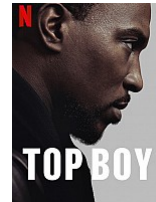
No Time to
Die



Outlander



Saltburn



Top Boy

Feature Films

SALTBURN

A Camera & Steadicam

Amazon Prime | Directed by Emerald Fennell
DOP Linus Sandgren FSF ASC

OUR MAN FROM JERSEY

B Camera & Steadicam

Netflix | Directed by Julian Farino
DOP Alan Stewart BSC

BATGIRL

B Camera & Steadicam

Warner Bros. | Directed by Adil El Arno and Bilal Fallah
DOP John Mathieson BSC

MATILDA THE MUSICAL

A Camera & Steadicam

Working Title Films / Netflix | Directed by Matthew Warchus
DOP Tat Radcliffe BSC

TETRIS**A Camera & Steadicam**

Apple TV+ | Directed by Jon S Baird
DOP Alwin H. Kuchler BSC

CINDERELLA**B Camera & Steadicam**

Columbia Pictures / Amazon Prime | Directed by Kay Cannon
DOP Andrew Dunn BSC

FALLING FOR FIGARO**A Camera & Steadicam**

Such Much Films / IFC Films | Directed by Ben Lewin
DOP Nick Lawson

NO TIME TO DIE**B Camera**

MGM | Directed by Cary Fukunaga
DOP Linus Sandgren FSF ASC

ANTLERS**A Camera & Steadicam**

Searchlight Pictures | Directed by Scott Cooper
DOP Florian Hoffmeister BSC

THE KING**A Camera & Steadicam | 2nd Unit**

Netflix | Directed by David Mitchod
DOP Adam Arkapaw ACS

OFFICIAL SECRETS**A Camera & Steadicam**

Entertainment One / IFC Films | Directed by Gavin Hood
DOP Florian Hoffmeister BSC

TOMB RAIDER**A Camera & Steadicam | UK Unit**

Warner Bros | Directed by Roar Uthaug
DOP George Richmond BSC

**JOHNNY ENGLISH
STRIKES AGAIN****B Camera & Steadicam**

Universal Pictures | Directed by David Kerr
DOP Florian Hoffmeister BSC

**THE NUTCRACKER
AND THE FOUR
REALMS****Camera Operator & Steadicam | 2nd Unit**

Walt Disney Pictures | Directed by Lasse Hallstrom
DOP Linus Sandgren FSF ASC

THE CHILDREN ACT**B Camera & Steadicam**

BBC Films / A24 | Directed by Richard Eyre
DOP Andrew Dunn BSC

**KINGSMAN: THE
GOLDEN CIRCLE****B Camera & Steadicam**

MARV Bespoke Productions | Directed by Mathew Vaughn
DOP George Richmond BSC

**BRIDGET JONES'S
BABY**

C Camera

Working Title Films / Universal Studios | Directed by Sharon McGuire
DOP Andrew Dunn BSC

THE LADY IN THE VAN

B Camera | Dailies

Tristar Productions / BBC Films | Directed by Nicolas Hytner
DOP Andrew Dunn BSC

SLOW WEST

Steadicam | Dailies (UK)

See-Saw Films / Film 4 | Directed by John MacLean
DOP Robbie Ryan BSC

SUNSHINE ON LEITH

B Camera | 2nd Unit DOP

DNA / Black Camel | Directed by Dexter Fletcher
DOP George Richmond BSC

ONE CHANCE

B Camera | Dailies

Weinstein Company | Directed by David Frankel
DOP Florian Ballhaus ASC

EFFIE

C Camera

Sovereign Films | Directed by Richard Laxton
DOP Andrew Dunn BSC

PERFECT SENSE

A Camera | 2nd Unit

Sigmaville Ltd / Zentrop Entertainment | Directed by David MacKenzie
DOP Giles Nuttgens BSC

DOOMS DAY

B Camera | 2nd Unit

Rogue Pictures / Crystal Sky Pictures | Directed by Neil Marshall
DOPs Sam McCurdy BSC & Peter Field

ON A CLEAR DAY

Main Unit B Camera

Forthcoming Productions / Take Film Partnerships | Directed by Gabby Dellal
DOP David Johnson BSC

TO END ALL WARS

B Camera | UK Unit

Argle Film Partners (US) | Directed by David L. Cunningham
DOP Greg Gardiner

TV

TOP BOY

Steadicam | Dailies

Cowboy Films / Netflix | Directed by Reinaldo Marcus Green
DOP Joe Anderson

CURFEW

Episodes 7 & 8

A Camera & Steadicam

Endeavor Content | Directed by Brian Kelly
DOP Denis Crossan BSC

OUTLANDER

Season 3, Episodes 1 & 3

A Camera & Steadicam

Sony Pictures / Left Bank | Directed by Brendan Maher
DOP Alastair Walker

OUTLANDER

Season 2, Episode 1 - 13

A Camera & Steadicam

Sony Pictures / Left Bank | Directed by Metin Huseyin, Douglas MacKinnon & Mike Barker
DOPs Steve McNutt ASC / CSC & Neville Kidd

GRANTCHESTER II

Episodes 1 & 2

B Camera & Steadicam

Lovely Day | Directed by Tim Fywell
DOP Kieran McGuigan BSC

STONEMOUTH**B Camera & Steadicam**

BBC Grafton House | Directed by Charles Martin
DOP Steve Lawes

VERA V**B Camera & Steadicam**

ITV Studios | Directed by Will Sinclair
DOP Cinders Foreshaw BSC

OUTLANDER

Season 1, Episodes 1-16

A Camera & Steadicam

Sony Pictures / Left Bank | Directed by John Dahl, Brian Kelly, Anna Foerster, Metin Huseyin & Mike Barker
DOPs Denis Crossan BSC, Martin Fuhrer BSC, David Higgs BSC & Neville Kidd

CASTLES IN THE SKY**Steadicam**

Hero Productions | Directed by Gillies MacKinnon
DOP Alasdair Walker

SHETLAND

Season 1, Episodes 1-4

A Camera & Steadicam

ITV Studios | Directed by John McKay & Stuart Svassand
DOPs Cinders Foreshaw BSC & Jean-Phillipe Gossart

UNKNOWN HEART

TV Movie

A Camera & Steadicam

Gate Film Productions | Directed by Giles Foster
DOP James Aspinall

SHERLOCK III**B Camera | Stunt Unit**

Hartswood West | Directed by Jeremy Lovering
DOP Peter Field

THE LAST MAN**A Camera & Steadicam**

Directed by Giles Foster
DOP Peter Field

M.I. HIGH**Steadicam**

Kudos | Directed by Simon Hynd
DOP Andrew Johnston

THE OTHER WIFE**A Cam & Steadicam**

Gate Film Productions | Directed by Giles Foster
DOP James Aspinall

ACCUSED II

4 Episodes

B Camera

RSJ Films | Directed by David Blair
DOPs Kieran McGuigan BSC & Fabian Wagner BSC

LINE OF DUTY

Season 1, Episodes 1 & 2

B Camera | Dailies

World Productions | Directed by David Caffrey
DOP Ruairi O'Brien ISC

THIS SEPTEMBER

Season 1 & 2

A Camera & Steadicam

Gate Film Productions | Directed by Giles Foster
DOP James Aspinall

THE DEEP**B Camera**

BBC / Tiger Aspect | Directed by Jim O'Hanlon & Colm McCarthy
DOPs Adam Suschitzky BSC & Damian Bromley

OGLIES

Animation Series

Main Unit

BBC | Directed by Nick Hopkin
DOP Peter Morgan

HOPE SPRINGS

Series 1, Episodes 5 & 6

A Cam & 2nd Unit DOP

BBC / Shed Production | Directed by Brian Kelly
DOP Lawrence Jones

HALF MOON**INVESTIGATIONS**

Series 1, Episodes 8 - 13

A Camera

BBC | Directed by Simon Hynd
DOP Peter Morgan

39 STEPS**B Camera & 2nd Unit DOP**

BBC Productions | Directed by James Hawes
DOP James Aspinall

NO HOLDS BARD**B Camera & 2nd Unit DOP**

BBC | Directed by Brian Kelly
DOP Peter Morgan

FUR TV**A Camera & DOP**

Warp Films / MTV | Directed by Chris Waitt & Simon Ellis
DOP Lighting Camera

LEGIT**A Camera**

RDF / BBC | Directed by Iain Davidson
DOP Lighting Camera

LILLIES**A Camera**

World Productions / BBC | Directed by Brian Kelly
DOP James Aspinall

TORCHWOOD

Series 1, Episodes 1 & 6

A Camera

BBC | Directed by Brian Kelly
DOPs Mark Waters & Jaz Castleton

SEA OF SOULS III

Episodes 2 & 3

A Camera

BBC / Sony Pictures Television | Directed by Brian Kelly
DOP Oliver Cheeseman

REBUS**B Camera**

SMG / Clerkenwell Films | Directed by Mathew Evans
DOP Alasdair Walker

SEA OF SOULS II**B Camera | 2nd Unit**

BBC / Sony Pictures Television | Directed by Various
DOPs Graham Frake & Andy Collins

SEA OF SOULS**B Camera | 2nd Unit**

BBC / Sony Pictures Television | Directed by Nick Willing
DOP Ernie Vinze BSC

THE PLAN MAN**A Camera**

IWC / Carlton | Directed by John Strickland
DOP Ivan Strasburg BSC

THE KEY**B Camera**

Little Bird / BBC | Directed by David Blair
Nigel Willoughby BSC

**MONARCH OF THE
GLEN V****B Camera | 2nd Unit**

Ecosse Films / BBC | Directed by Brian Kelly & Ian Knox
DOP John Mcglashan

FAT FRIENDS II**A Camera & 2nd Unit DOP**

Tiger Aspect / Rollem Productions | Directed by Audrey Cook, Tania Daiez & Dan Zeff
DOP Alasdair Walker

Short Films

THE LAST MAN

A Camera & Steadicam

Independent Films | Directed by Gavin Rothery
DOP Peter Field

Other Credits

TOM CRUISE MOVIE SPECIAL

B Camera

Sky Creative | Directed by Lee Parker
DOP Daniel Landin BSC

SKY CRICKET

B Camera

Sky Creative | Stuart Burley
DOP Karl Watkins

SOLHEIM CUP

B Camera

Sky Creative | Directed by Zoe Brooks
DOP Karl Watkins

Commercials

NIKE PHANTOM

B Camera

Directed by Mathew Vaughn
DOP George Richmond BSC

SCOTRAIL

Steadicam

MTP | Directed by Ben Craig
DOP Ben Davis

GANTEN WATER

Steadicam

Freakwork Films | Directed by Hamish Allison
Alasdair Walker

BOOTS 'CHRISTMAS'

Russian Arm Operator

Biscuit Filmworks | Directed by Noam Murro
DOP Daniel Landin BSC

JAGUAR F TYPE

B Camera

Black Label | Directed by Mathew Vaughn
DOP George Richmond BSC

ROYAL BANK OF SCOTLAND

Steadicam

Madam Films | Directed by Pat Holden
DOP Karl Oskarsson IKS

HUNTERS BOOTS

B Camera

Annex Films | Directed by Simon Aboud
DOP Joe Marcantonio

BETFAIR

B Camera

Kream | Directed by Sam Washington
DOP Alan Stewart

PIZZA HUT

B Camera

Large | Directed by Chris Mudge
DOP Simon Hawkin

T Mobile

B Camera

Partizan | Directed by Matthias
DOP Jan Richter-Friss

KFC

B Camera

RSA | Directed by Luke Scott
DOP Jan Richter-Friss

Music Videos

FLORENCE AND THE MACHINE

"QUEEN OF PEACE"

Steadicam

Park Pictures | Directed by Vincent Haycock
DOP Steve Annis

FLORENCE AND THE MACHINE

"LONG & LOST"

Steadicam

Park Pictures | Directed by Vincent Haycock
DOP Steve Annis