



Katie MacGregor | Production Designer

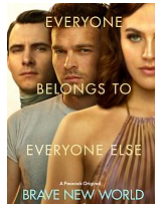
Katie has over 20 years' experience as a Designer and Art Director and is based in South Wales.

Katie is originally from Toronto where she developed her skills on several large production studio builds as a draftsman, set designer and art director before studying Production Design at the National Film and Television school in the UK.

As a designer, Katie's most recent credits include, "Harry Potter 20th Anniversary: Return to Hogwarts" for Warner Brothers and the final series of the Tracy Beaker franchise, "The Beaker Girls". Katie was also recently nominated for an Emmy (2025) for Enid Blyton's "Malory Towers" for the BBC.

You can see more of Katie's work here: www.katiemacgregor.com

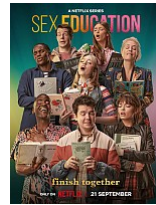
Selected Credits



Brave New World



Harry Potter 20th Anniversary: Return to Hogwarts



Sex Education



Watchmen

TV

MALORY TOWERS

Nominated: "Children's and Family Emmy Award" (2025): Outstanding Art Direction / Set Decoration / Scenic Design

Production Designer

Queen Bert Productions | Directors include Rebecca Rycroft, Tracy Rooney & Bruce McDonald
Produced by David Collier

THE BEAKER GIRLS

Production Designer

CBBC | Directed by John McKay
Produced by Gina Cronk & John McKay

**THE REAL
STONEHOUSE**

Production Designer

ITV | Directed by Clare Savage

Produced by Gareth Boreham, Clare Savage & Kate Turnbull

**HARRY POTTER 20TH
ANNIVERSARY:
RETURN TO
HOGWARTS**

TV Special

Production Designer

Pulse Films for HBO Max | Directed by Joe Pearlman, Casey Patterson, Eran Creevy & Giorgio Testi

Produced by Lottie Allen, Alice Cady, Rosa Junkovic & Maryam Lamond

**WHAT JUST
HAPPENED**

Production Designer

BBC2 Wales | Directed by Stuart Laws

Produced by Henry Widdicombe

**LIVE FROM BARRY
ISLAND**

Production Designer

BBC One Wales | Directed by Stuart Laws

Produced by Henry Widdicombe

ALEX RIDER

Series 2

Senior Art Director

Eleventh Hour Films / Amazon Studios | Directed by Rebecca Gatward & Jon Jones

Produced by Richard Burrell

BRAVE NEW WORLD

Series 1 | Episodes 1 & 2

Supervising Art Director

Amblin TV for Sky | Directed by Owen Harris

Produced by Steven Spielberg, David Weiner, Kim Todd, Chris Thompson & Tom Horton

WATCHMEN

8 part Miniseries

Supervising Art Director (UK)

HBO | Directed by Nicole Kassell

Produced by Darin McLeod

SEX EDUCATION

Series 1

Supervising Art Director

Eleven for Netflix | Directed by Ben Taylor

Executive Producers: Jamie Campbell & Joel Wilson

DECLINE & FALL

3 part Miniseries

Art Director

Tiger Aspect for BBC2 | Directed by Guillem Morales

Produced by Matthew Bird

Designer Kristian Milsted

POBOL Y CWM

40+ Episodes

Art Director

BBC Wales | Designer Alex Morgan & John Thompson

RED RIDING 1983

Art Director

Revolution Films for Channel 4 | Directed by Anand Tucker

Produced by Anita Overland

Designer Alison Dominitz

Feature Films

MAD, SAD & BAD

Production Designer

Moxie Makers | Directed by Avie Luthera
Produced by Bex Hopkins & Christine Alderson

SHOW DOGS

Art Director

Open Road Films | Directed by Raja Gosnell
Produced by Deepak Nayar & Philip von Alvensleben
Designer Amanda McArthur

BILLIONAIRE RANSOM

Art Director

Pinewood Pictures | Directed by Jim Gillespie
Produced by Sarah Black & Ed Elbert
Designer Ben Scott

Short Films

VOLVO: 'THE BIRDMAN'

Production Designer

Pulse Films | Directed by D.A.R.Y.L
Produced by Drew O'Neill

OZGEN

Production Designer

Random Acts / Channel 4 / Other Roads Films | Directed by Clive Flowers
Produced by Stephen Thomas

LOVE STRUCK

Production Designer

It's My Shout / BBC Wales | Directed by Leyla Pope
Produced by Lisa Edwards

Commercials

Katie has designed numerous commercials for a wide-range of brands, production companies and Directors.

Brands include; Sony, Canon, Delta Airlines, Heineken, EA FIFA, Moonpig UK and Organ Donation UK.

Directors include; Mat Kirkby, Mark Rodway, Mark Wordley and Mark Evans.

Production companies include; Rogue Films, Asylum Films and Ad Hoc Films.